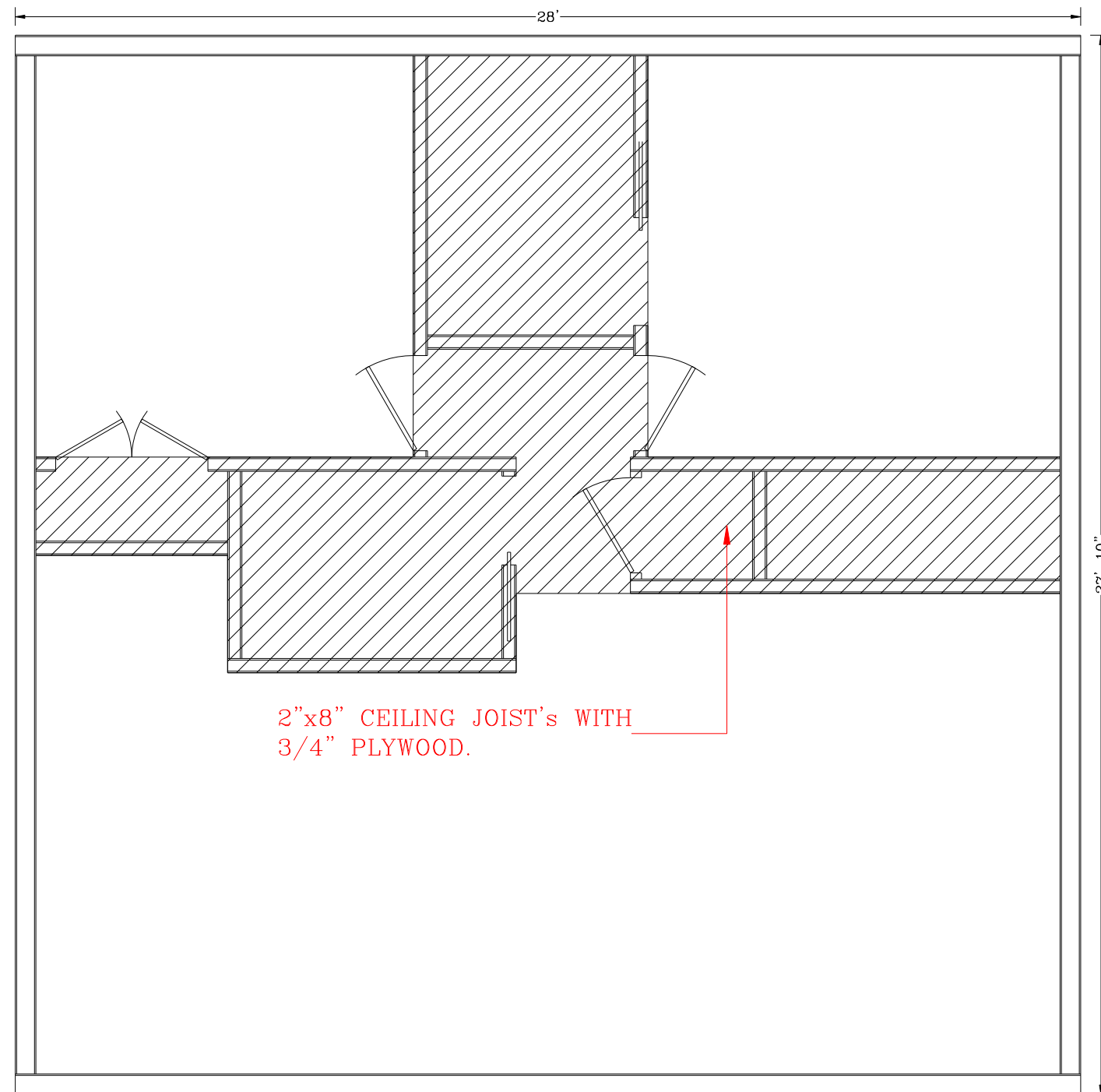
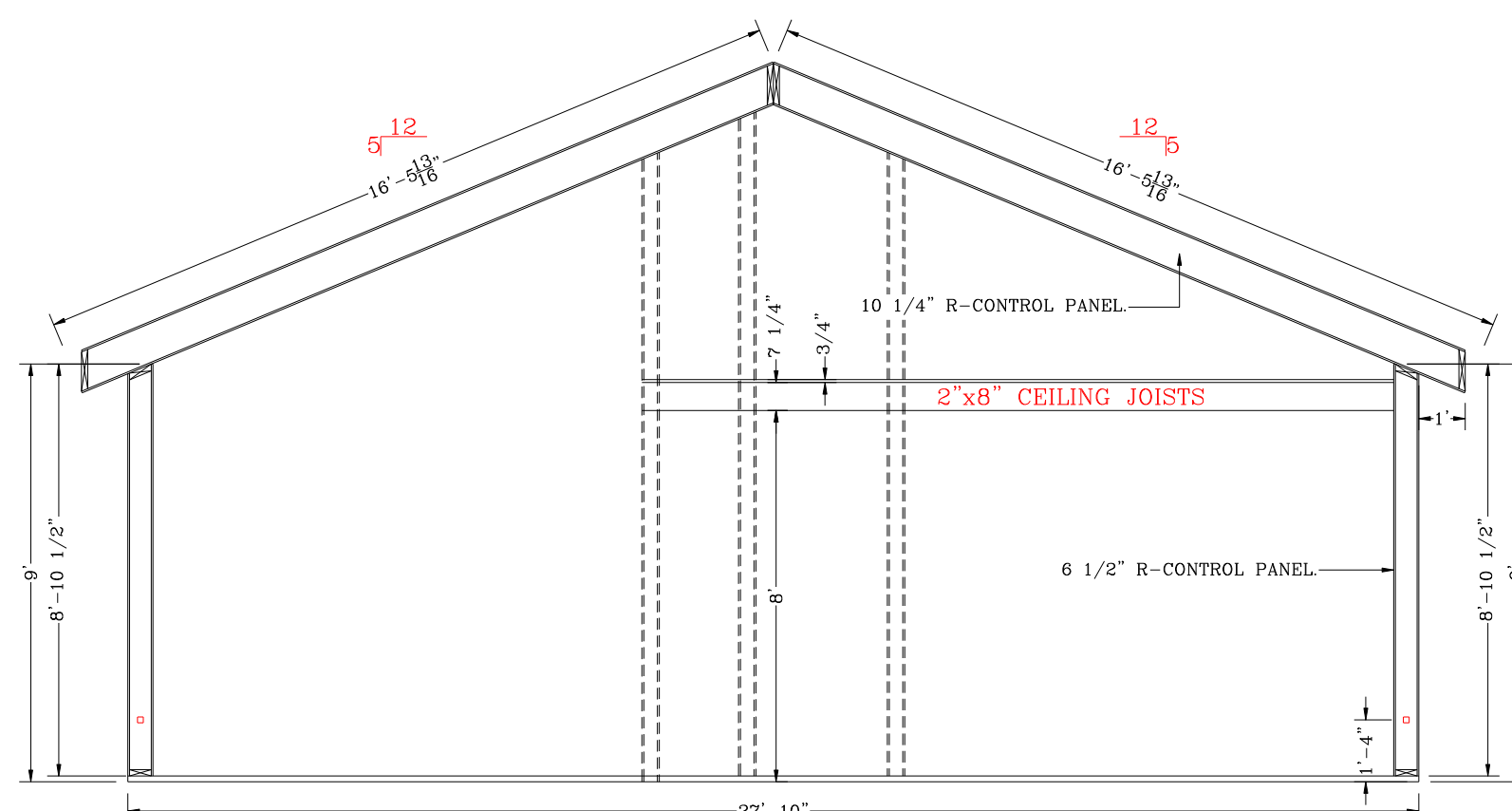


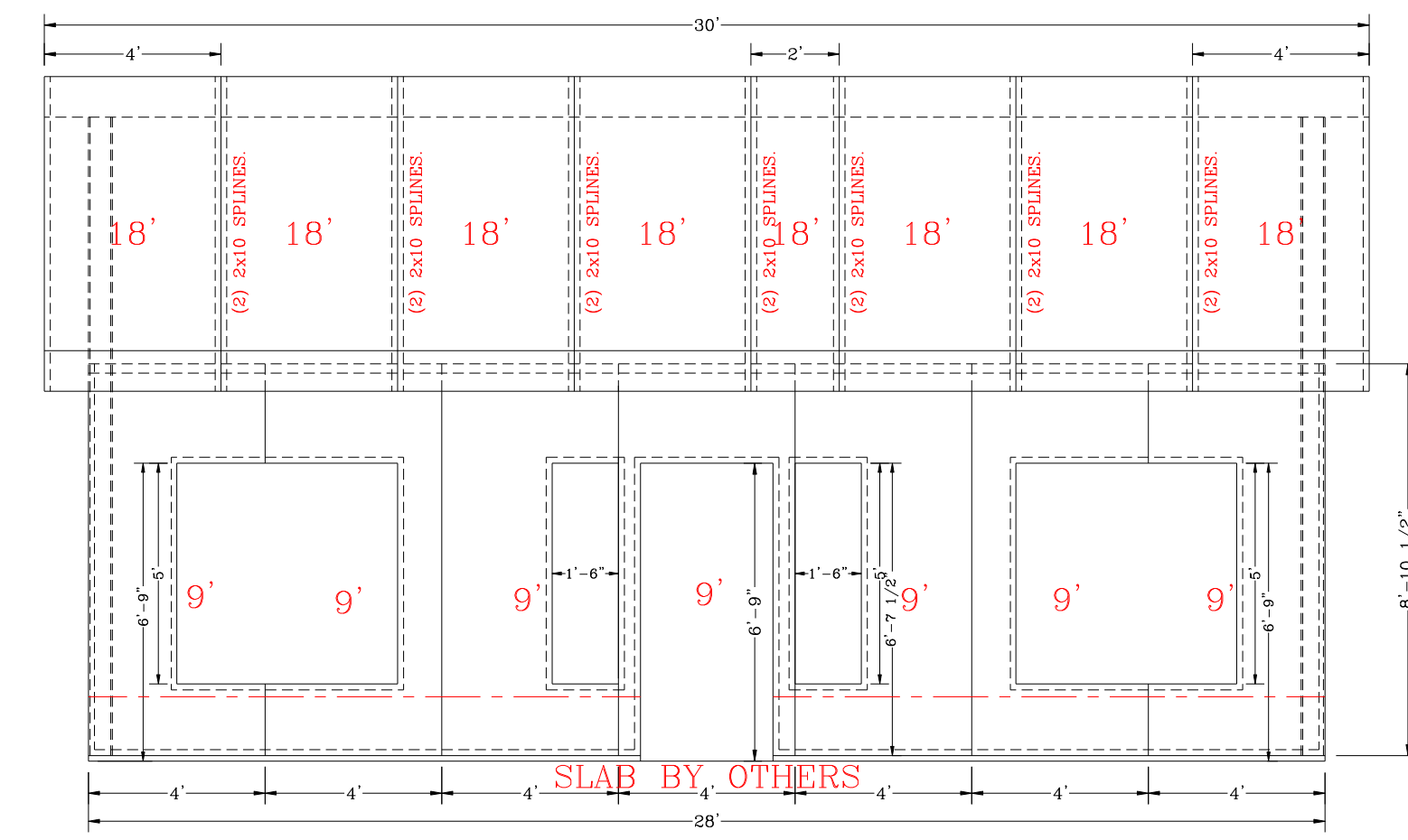
FLOOR PLAN.



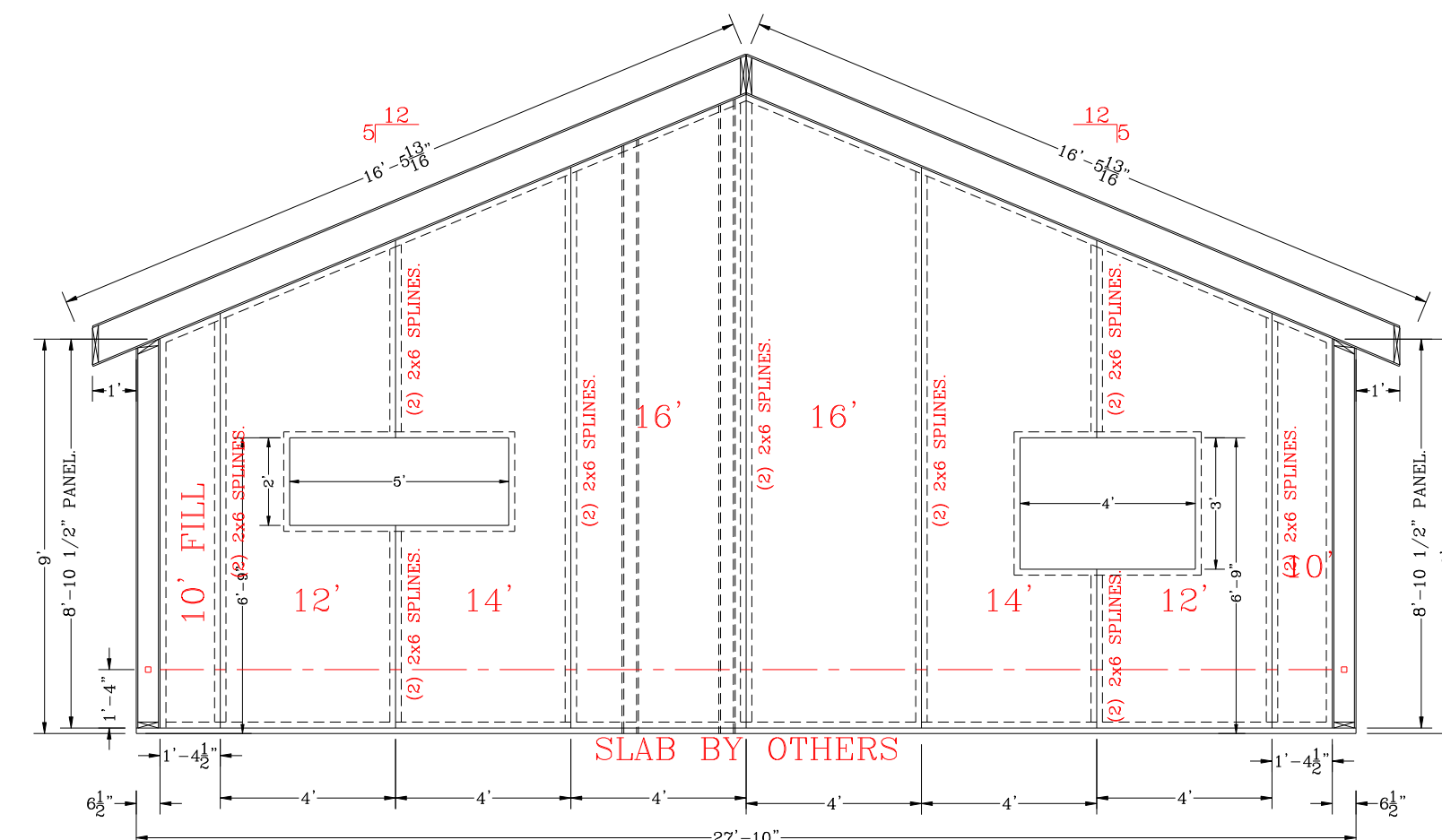
2"x8" CEILING JOIST'S WITH
3/4" PLYWOOD.



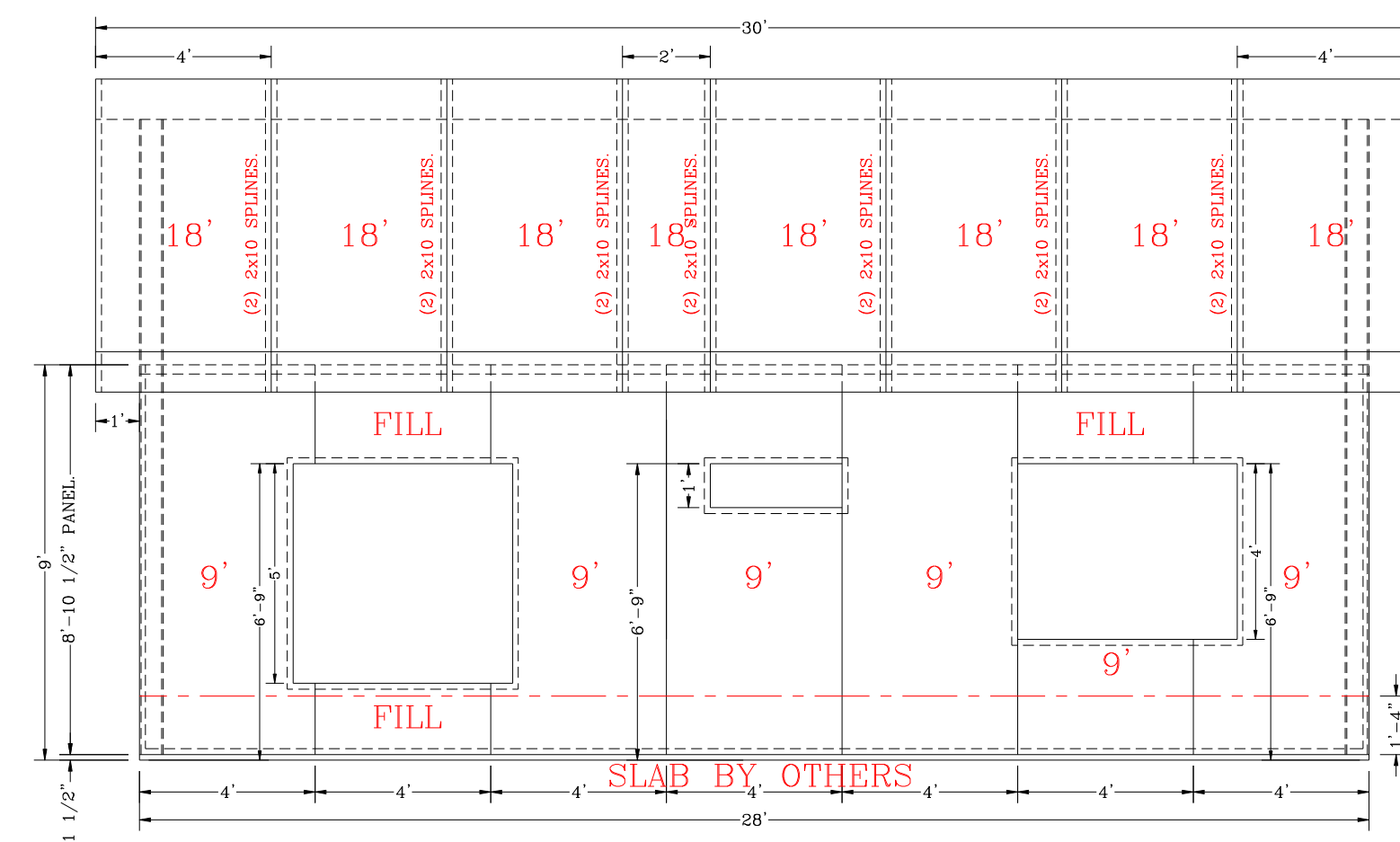
SECTION



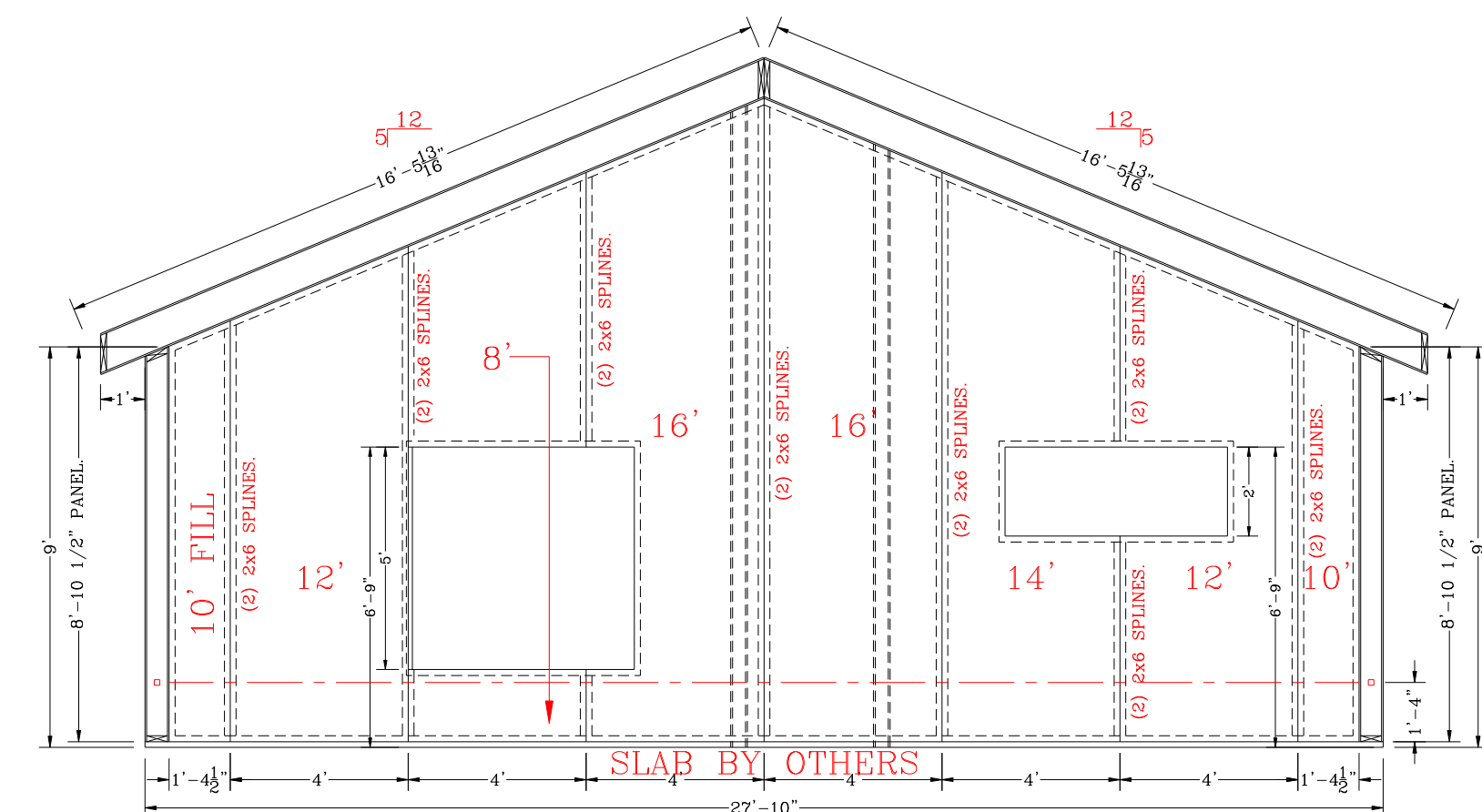
FRONT ELEVATION



LEFT ELEVATION

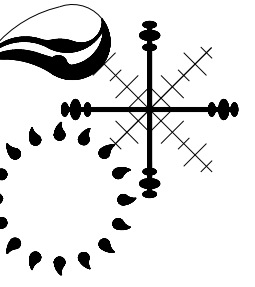


REAR ELEVATION



RIGHT ELEVATION

BRANCH RIVER PLASTICS Inc.
15 Thurber Boulevard
Smithfield, Rhode Island 02917
ph# (401) 232-0270 / fax# (401) 231-3434
E-mail: rick@branchriver.com



CLIENT:

PROJECT: SO# 00000
ADU UNIT 779

DATE: 03-13-2024
DRAWN BY: RAD

SHEET:

BR1

SCALE: 1/4" = 1'-0"