

SIP THICKNESS	WEIGHT (psf)
4 1/2"	3.2
6 1/2"	3.4
8 1/4"	3.6
10 1/4"	3.8
12 1/4"	4.0

SIP THICKNESS	R-VALUE @ 75°F	R-VALUE @ 40°F
4 1/2"	14.9	16.0
6 1/2"	22.6	24.4
8 1/4"	29.3	31.7
10 1/4"	37.0	40.0
12 1/4"	44.7	48.3

**Mechanical Ventilation**  
R-Control SIP construction effectively eliminates air infiltration and exfiltration in a structure. Energy robbing air changes are greatly reduced. For this reason R-Control SIP Manufacturers require that you use an air exchanger. R-Control also recommends that your structure be analyzed by a qualified HVAC representative to determine proper ventilation design. Refer to R-Control SIP Technical Bulletins sip no. 2000 and sip no. 2051.

Note: Contractor/Panel installer must drill holes thru all wood components (Splines, shoe, plates, jacks etc.) To be compatible with wirechases in panels. Contractor to mark wirechase locations on panels.

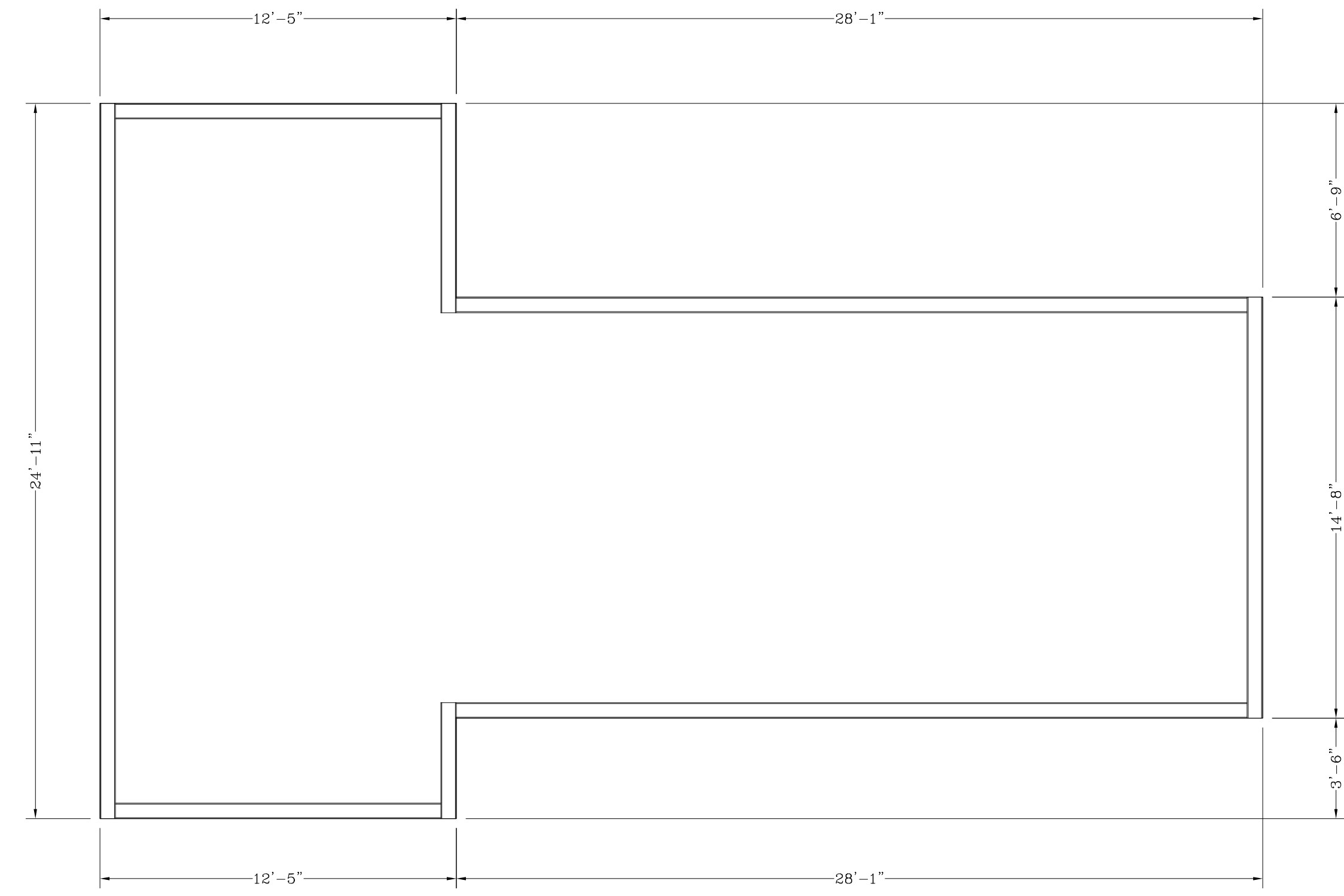
Note: If Vertical Wirechases are needed please indicate on drawing.

**Shop Drawing Review**  
For all Pages of Shop Drawings

- Wall Dimensions
- Wall Heights
- Rough Opening Dimensions
- Rough Opening Locations
- Floor Heights
- Beam Sizes and Locations
- Roof Pitch
- Wirechase Dimensions
- Dormers

Protection: Protect installed product and finish surfaces from damage during construction.

1. Roof SIPs: Protect roof SIPs from weather by roofing materials to provide temporary protection at the end of the day or when rain or snow is imminent.
2. After installation, cover SIPs to prevent contact with water on each exposed SIP edges and faces.



**FLOOR PLAN**

**R-Control SIPs Don'ts**

- 1.) Don't drop SIPs on corners.
- 2.) Don't store SIPs directly on the ground.
- 3.) Don't leave SIPs exposed to weather for an extended period of time.
- 4.) Don't lift or place SIPs without appropriate equipment.
- 5.) Don't overcut OSB facings at openings.
- 6.) Don't have SIP facings and untreated plates in direct contact with concrete.
- 7.) Don't have unsupported SIP facings.
- 8.) Don't have cap or sill plates less than full SIP width or have plate joints aligned with spline joints.
- 9.) Don't install SIPs without adequate bracing.
- 10.) Don't cut SIP facings for electrical chases, use factory provided chases in SIP core.
- 11.) Don't have cuts in 2X or I-Beam splines.
- 12.) Don't overdrive fasteners into SIP facings.
- 13.) Don't have unsupported horizontal joints in walls.
- 14.) Don't install plumbing in SIPs.
- 15.) Don't install recessed lights in SIPs.
- 16.) Don't install SIPs without structural review by a qualified design professional.
- 17.) Don't make any field modifications to SIPs, such as openings/penetrations, without review by a qualified design professional.

Updated 6-15-20

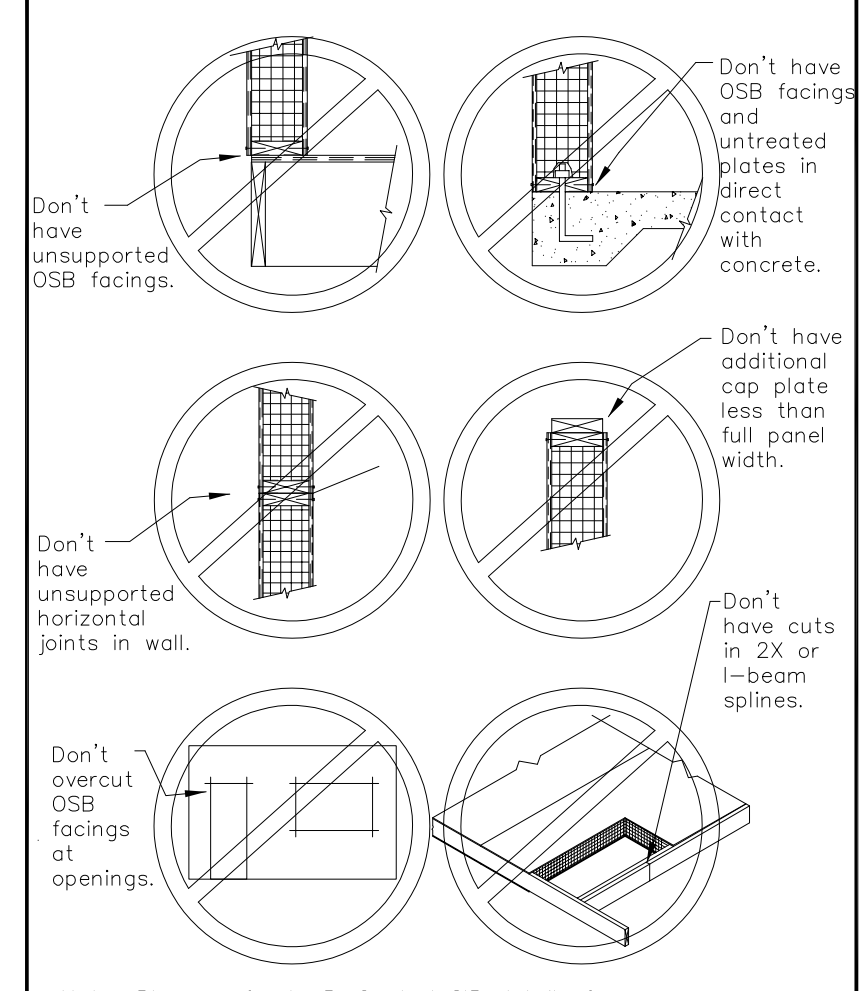
R-Control® SIP	
TITLE: SIP Don'ts	NO. SIP-100a

**R-Control SIPs Don'ts**

- 1.) Don't drop SIPs on corners.
- 2.) Don't store SIPs directly on the ground.
- 3.) Don't leave SIPs exposed to weather for an extended period of time.
- 4.) Don't lift or place SIPs without appropriate equipment.
- 5.) Don't overcut OSB facings at openings.
- 6.) Don't have SIP facings and untreated plates in direct contact with concrete.
- 7.) Don't have unsupported SIP facings.
- 8.) Don't have cap or sill plates less than full SIP width or have plate joints aligned with spline joints.
- 9.) Don't install SIPs without adequate bracing.
- 10.) Don't cut SIP facings for electrical chases, use factory provided chases in SIP core.
- 11.) Don't have cuts in 2X or I-Beam splines.
- 12.) Don't overdrive fasteners into SIP facings.
- 13.) Don't have unsupported horizontal joints in walls.
- 14.) Don't install plumbing in SIPs.
- 15.) Don't install recessed lights in SIPs.
- 16.) Don't install SIPs without structural review by a qualified design professional.
- 17.) Don't make any field modifications to SIPs, such as openings/penetrations, without review by a qualified design professional.

Updated 6-15-20

R-Control® SIP	
TITLE: SIP Don'ts	NO. SIP-100a



Note: Please refer to R-Control SIP details for proper installation techniques.

Updated 6-15-20

R-Control® SIP	
TITLE: SIP Don'ts	NO. SIP-100b

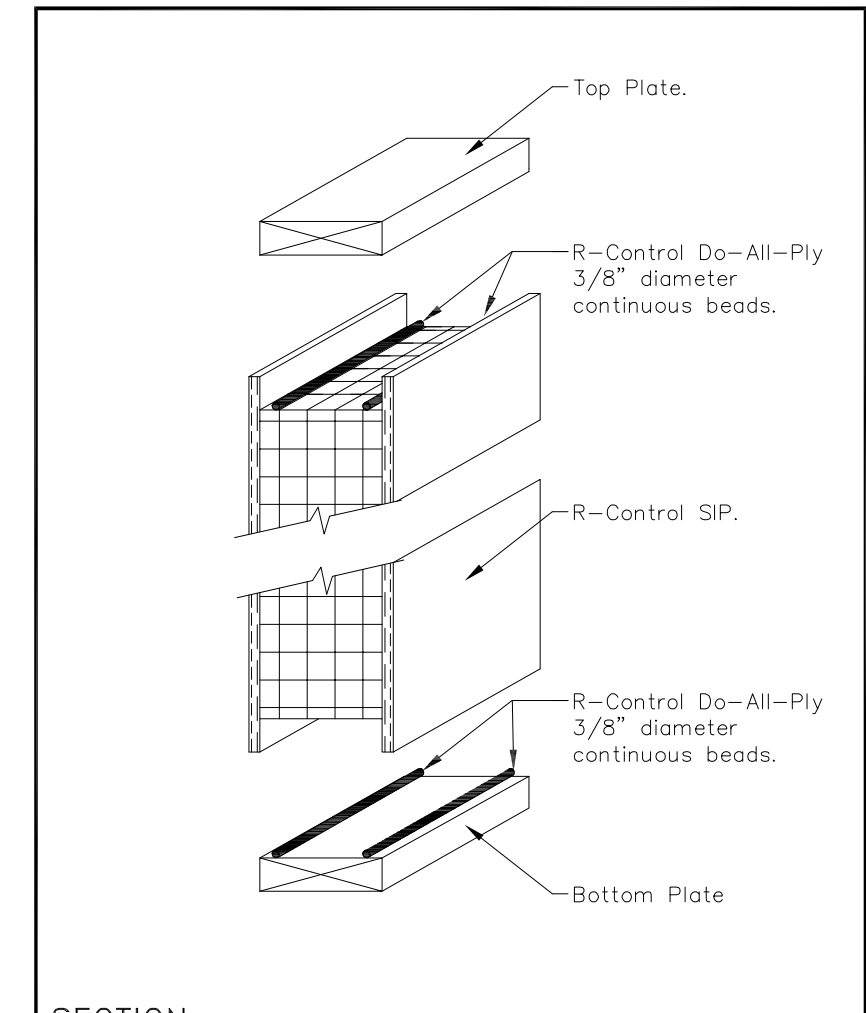
**R-Control Do-All-Ply and SIP Tape**

- 1.) Make certain surfaces are clean, dry, and free of dirt and foreign materials prior to placement of R-Control Do-All-Ply or SIP Tape.
- 2.) Store R-Control Do-All-Ply and SIP Tape in a warm area prior to installation during cold weather.
- 3.) Place R-Control Do-All-Ply in straight CONTINUOUS 3/8" diameter beads as shown in details.
- 4.) Place R-Control SIP Tape at joints between SIPs as shown in details.
- 5.) After SIP Tape installation, use a hard roller to apply pressure to the SIP Tape surface to promote adhesion.
- 6.) Apply SIP Tape or equivalent vapor retarder on interior or exterior of SIP per climate conditions or code requirement.
- 7.) Refer to R-Control Do-All-Ply and SIP Tape safety data sheets.

NOTE: It is the responsibility of the installer to apply R-Control Do-All-Ply and R-Control SIP Tape properly. Failure to install R-Control Do-All-Ply and R-Control SIP Tape in accordance with instructions and as shown in details will reduce the durability of the SIP structure.

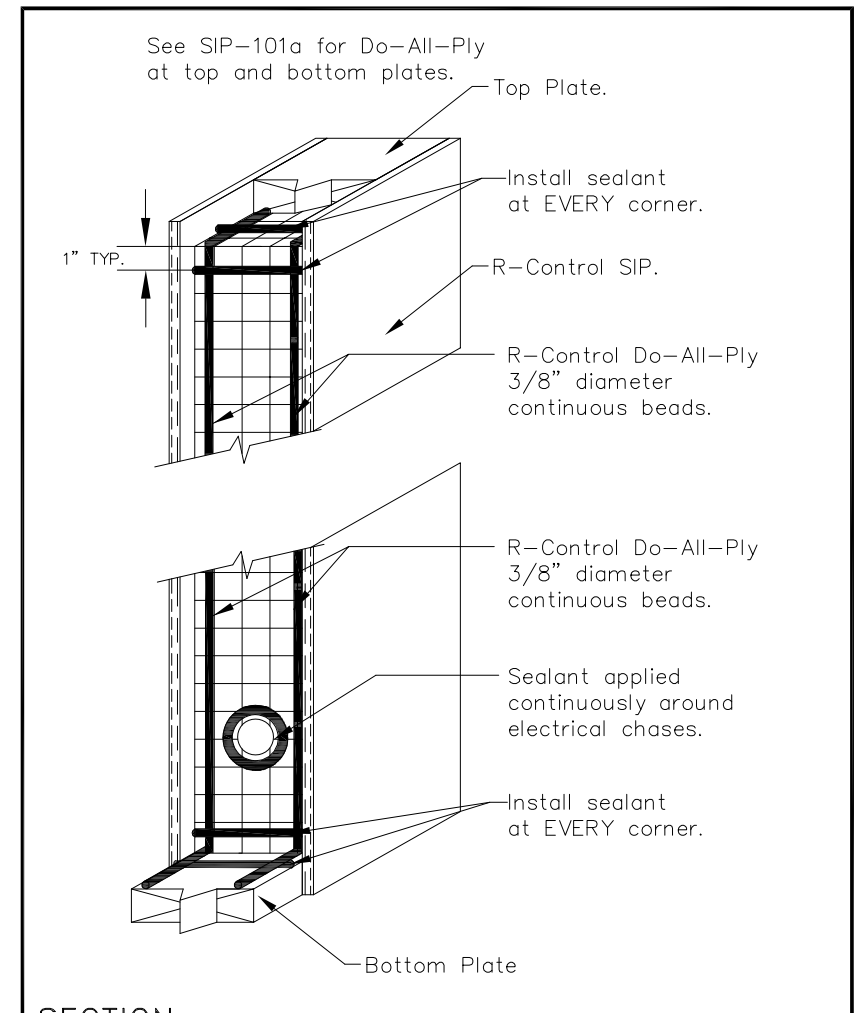
Updated 6-15-20

R-Control® SIP	
TITLE: Do-All-Ply and SIP Tape	NO. SIP-101



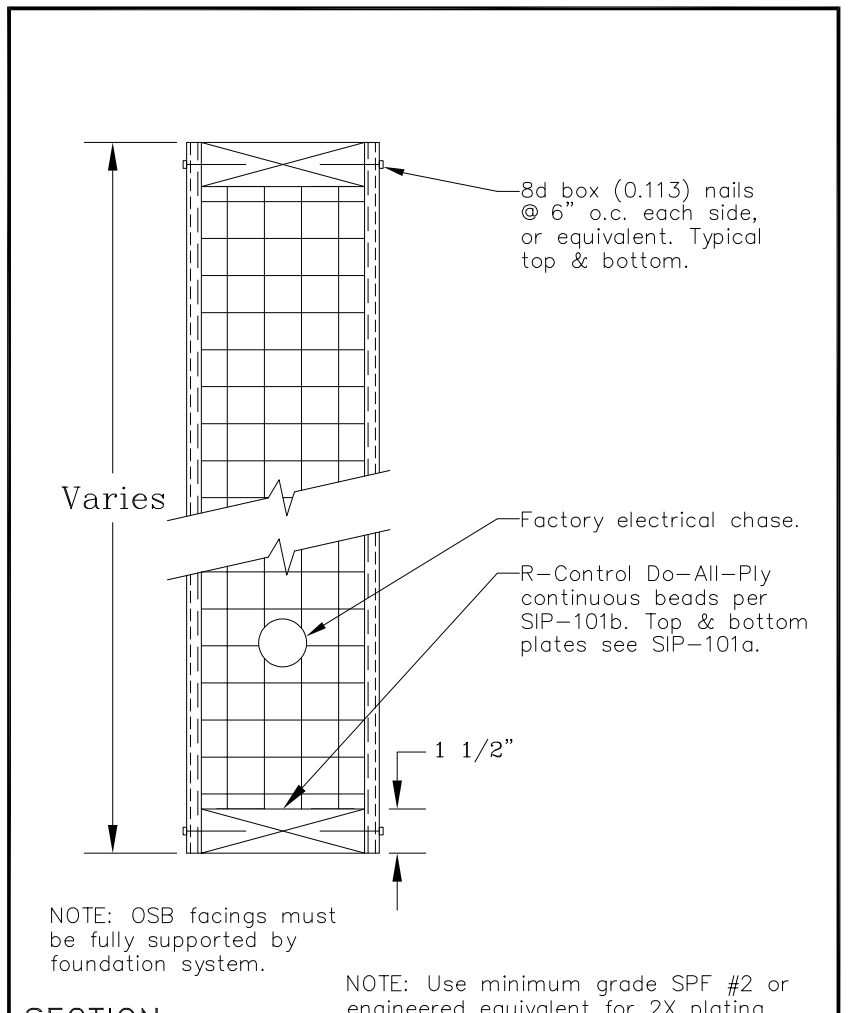
SECTION Scale: NTS Updated 6-15-20

R-Control® SIP	
TITLE: Do-All-Ply® Application	NO. SIP-101a



SECTION Scale: NTS Updated 6-15-20

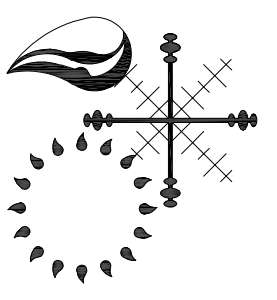
R-Control® SIP	
TITLE: Do-All-Ply® Application	NO. SIP-101b



SECTION Scale: NTS Updated 6-15-20

R-Control® SIP	
TITLE: Plate Connections	NO. SIP-101c

BRANCH RIVER PLASTICS Inc.  
15 Thurber Boulevard  
Smithfield, Rhode Island 02917  
ph# (401) 232-0270 / fax# (401) 231-3434  
E-mail: rick@branchriver.com



CLIENT: CLIENT NAME  
CLIENT PHONE:  
CLIENT EMAIL:

PROJECT: # 0000  
TINY HOME  
STREET  
CITY, ST ZIP CODE

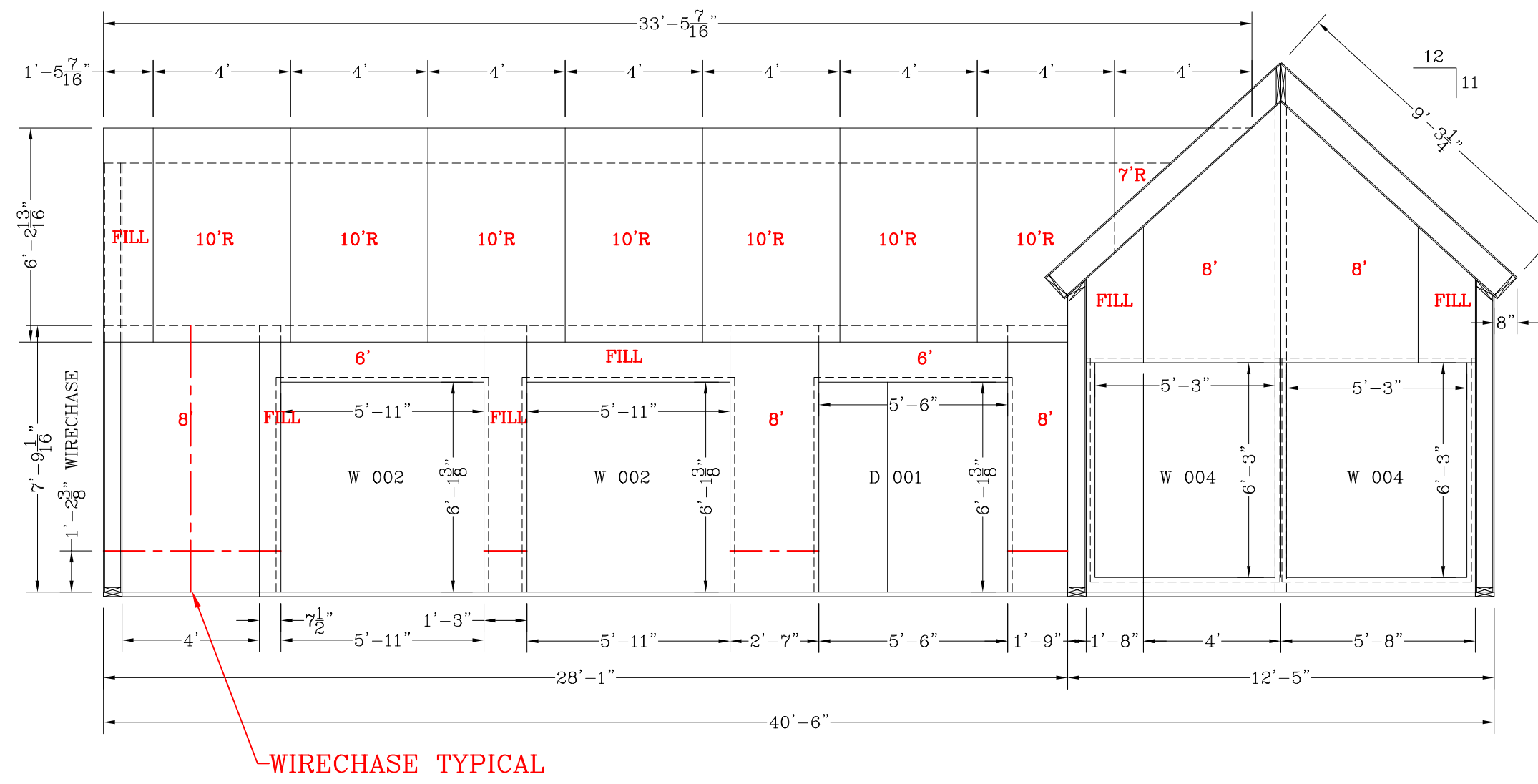
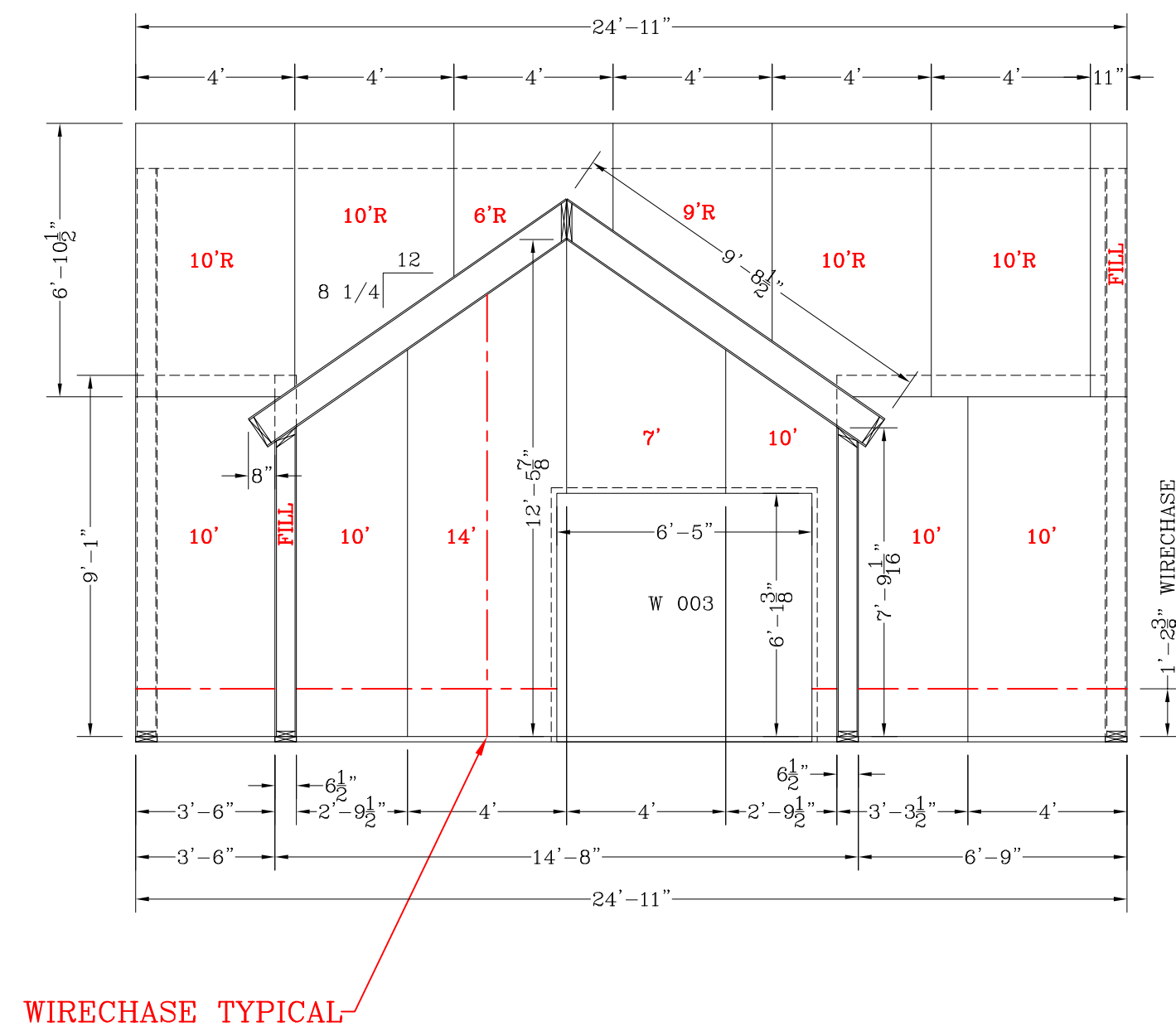
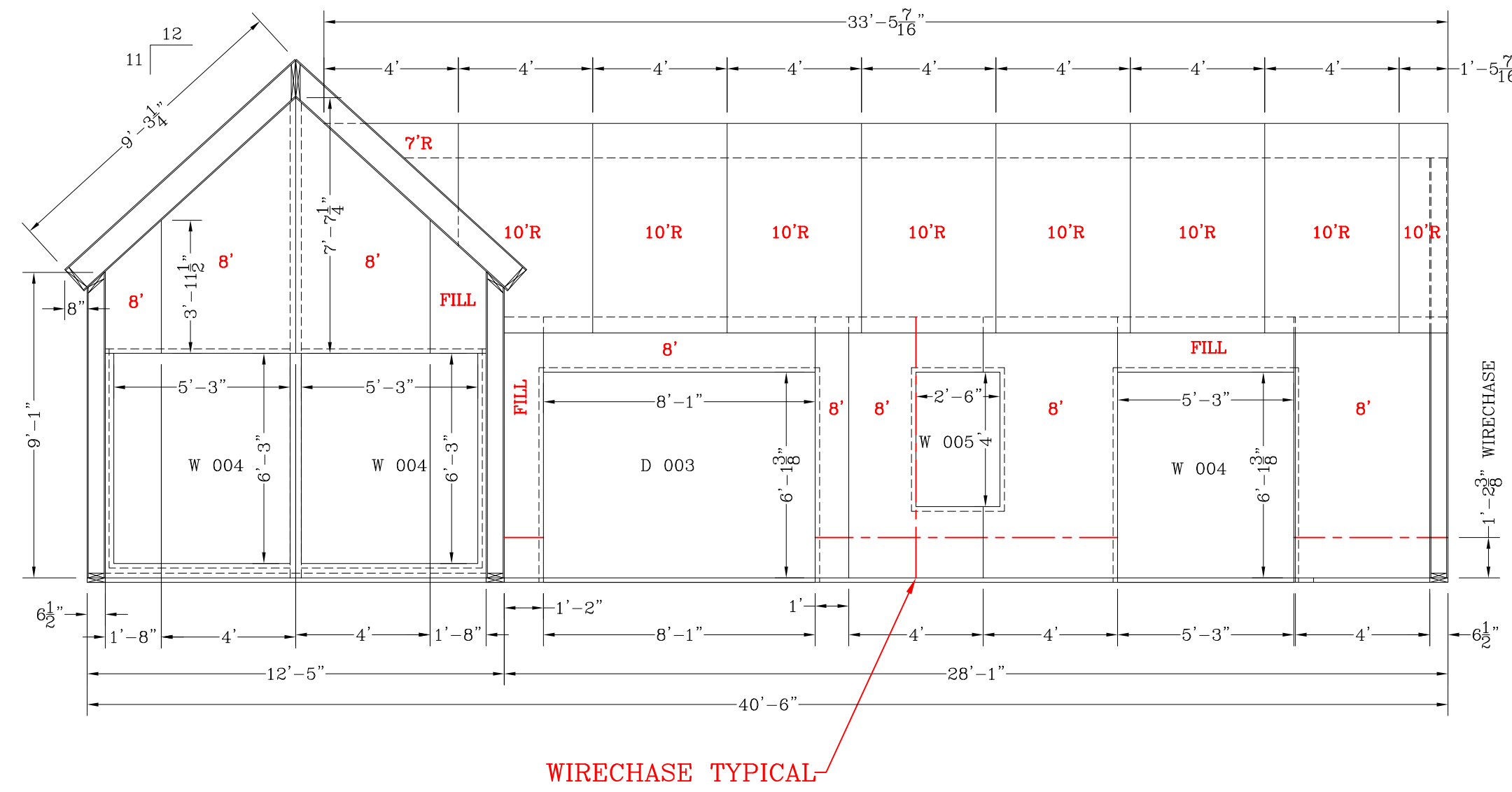
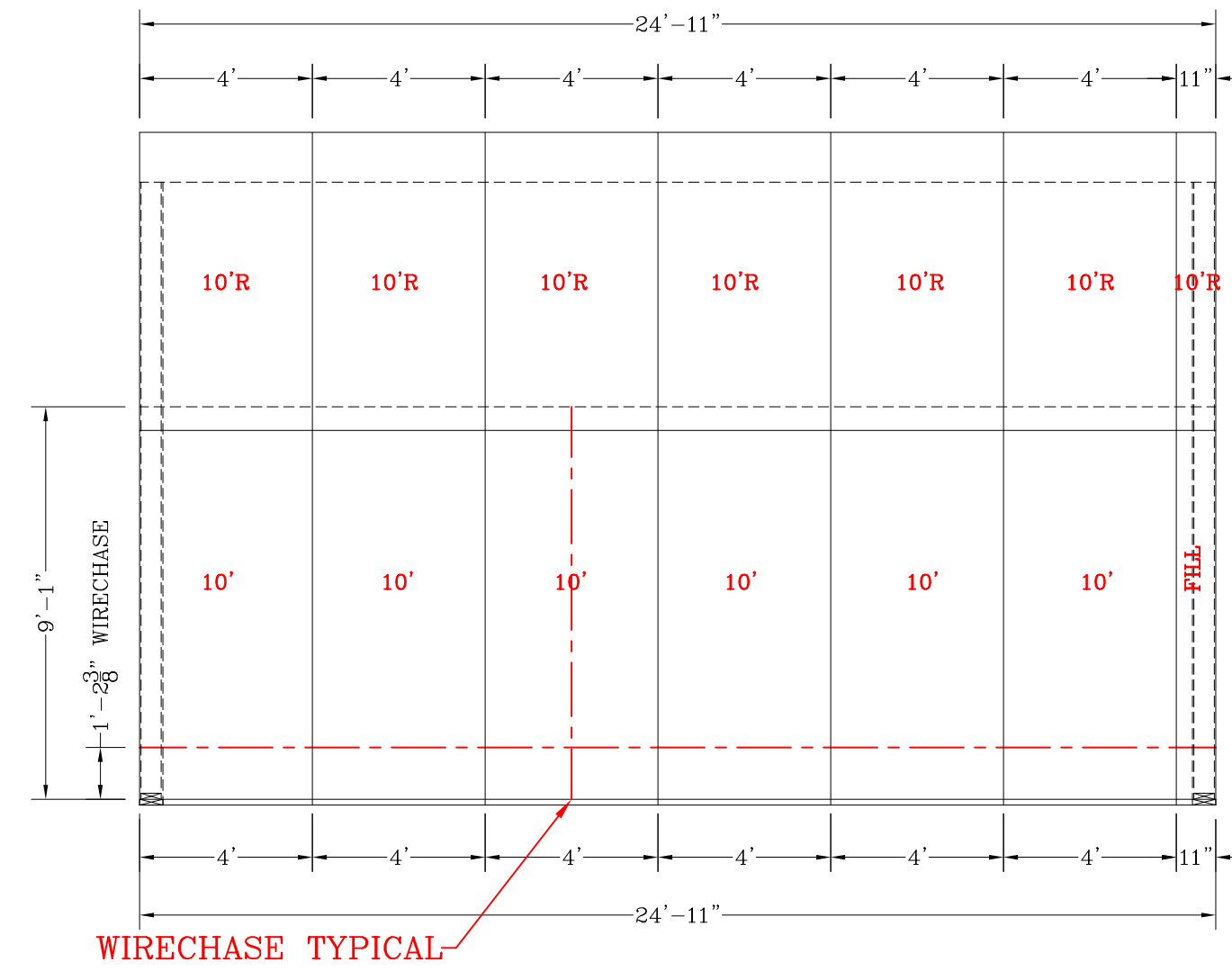
REVISIONS:  
2-10-2023

DATE: 4-1-2024  
DRAWN BY: CDL

SHEET:

BR1

SCALE: 1/4" = 1'-0"



SIP THICKNESS	WEIGHT (psf)
4 1/2"	3.2
6 1/2"	3.4
8 1/4"	3.6
10 1/4"	3.8
12 1/4"	4.0

SIP THICKNESS	R-VALUE @ 75°F	R-VALUE @ 40°F
4 1/2"	14.9	16.0
6 1/2"	22.6	24.4
8 1/4"	29.3	31.7
10 1/4"	37.0	40.0
12 1/4"	44.7	48.3

**Mechanical Ventilation**  
 R-Control SIP construction effectively eliminates air infiltration and exfiltration in a structure. Energy robbing air changes are greatly reduced. For this reason R-Control SIP Manufacturers require that you use an air exchanger. R-Control also recommends that your structure be analyzed by a qualified HVAC representative to determine proper ventilation design. Refer to R-Control SIP Technical Bulletins sip no. 2000 and sip no. 2051.

Note: Contractor/Panel installer must drill holes thru all wood components (Spines, shoe, plates, jacks etc.) To be compatible with wirechases in panels. Contractor to mark wirechase locations on panels.

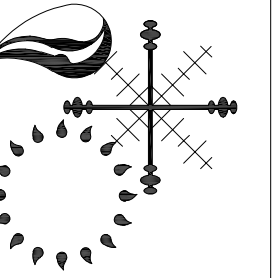
Note: If Vertical Wirechases are needed please indicate on drawing.

**Shop Drawing Review**  
 For all Pages of Shop Drawings

- Wall Dimensions
- Wall Heights
- Rough Opening Dimensions
- Rough Opening Locations
- Floor Heights
- Beam Sizes and Locations
- Roof Pitch
- Wirechase Dimensions
- Dormers

Protection: Protect installed product and finish surfaces from damage during construction.

1. Roof SIPs: Protect roof SIPs from weather by roofing materials to provide temporary protection at the end of the day or when rain or snow is imminent.
2. After installation, cover SIPs to prevent contact with water on each exposed SIP edges and faces.



**BRANCH RIVER PLASTICS Inc.**  
 15 Thurber Boulevard  
 Smithfield, Rhode Island 02917  
 ph# (401) 232-0270 / fax# (401) 231-3434  
 E-mail: rick@branchriver.com

CLIENT: \_\_\_\_\_  
 CLIENT NAME \_\_\_\_\_  
 PHONE: \_\_\_\_\_  
 EMAIL \_\_\_\_\_

PROJECT: # 0000  
 TINY HOME  
 STREET \_\_\_\_\_  
 CITY, ST ZIP CODE \_\_\_\_\_

REVISIONS:  
 2-10-2023

DATE: 4-1-2024  
 DRAWN BY: CDL

SHEET:

BR2

SCALE: 1/4" = 1'-0"