

Perimeter / Underslab

Molded Polystyrene Insulation.

Branch River molded polystyrene insulation with borate is a cost-effective, durable, and energy efficient solution for below grade insulation applications. It is an ideal material to stop energy loss at the foundation or slab. Branch River insulation with borate is a proven material with built in protection against the destructive force of termites. Branch River insulation is available in thicknesses to meet your local R-5, R-7.5, and R-10 insulation requirements.

- R-value that never changes and is stable over time
- Range of compressive strengths available
- Closed cell insulation with superior moisture resistance
- High drying potential to rapidly release absorbed moisture
- Meets code requirements for continuous insulation

Strength/R-value.

BRANCH RIVER	Compressive Strength ¹ , psi	R-value/inch ²	
		75°F ³	40°F ⁴
150	15	4.2	4.6
250	25	4.4	4.8
400	40	4.4	4.8
600	60	4.5	4.9

¹ Compressive strength @ 10% deformation.
² R-value units are °F-ft²-h/Btu.
³ Recommended for design in WARM climates.
⁴ Recommended for design in COLD climates.

Branch River insulation is available in a wide range of R-values and thicknesses to meet your needs. Product thicknesses are provided in the Branch River insulation Thickness Selector. Project requirements vary, so Branch River insulation can be ordered in any R-value thicknesses to meet your needs.

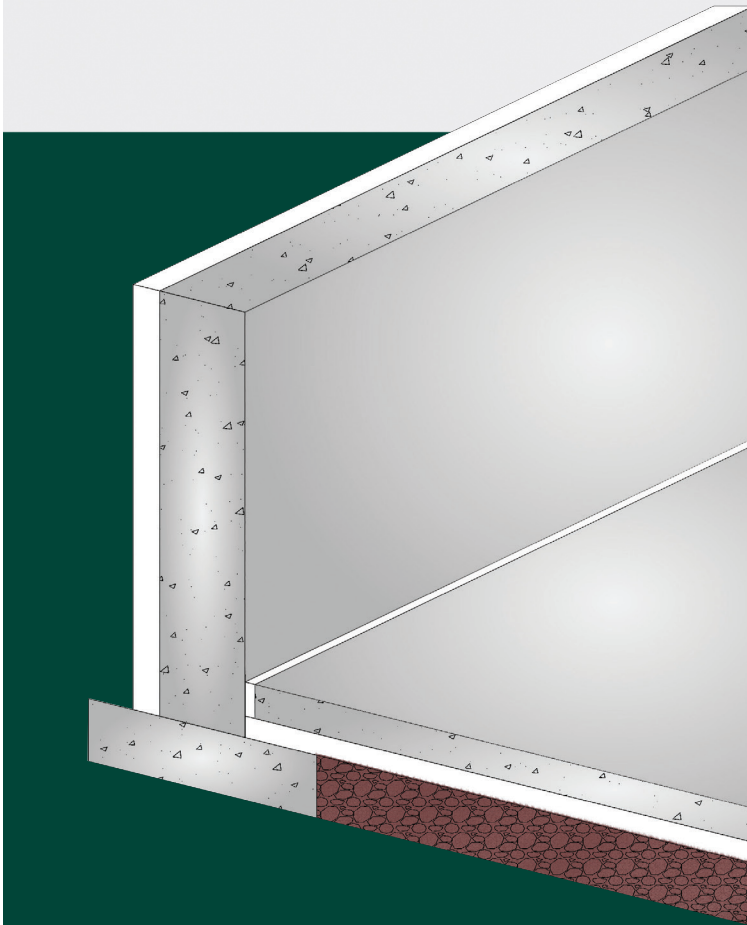
Proven to meet, or exceed, building codes.

Branch River insulation is manufactured under an industry leading quality control program monitored by UL and further recognized in UL Evaluation Report UL ER40326-01. Branch River insulation meets ASTM C578, “Standard Specification for Rigid, Cellular Polystyrene Thermal Insulation”.



Stands up to the weather.

When tested in accordance with ASTM C1512, “Standard Test Method for Characterizing the Effect of Exposure to Environmental Cycling on Thermal Performance of Insulation Products”, Branch River insulation maintains its R-value and strength after severe exposure to freeze-thaw cycles.



FOAM FACTS: Branch River insulation outperforms XPS.

- Branch River insulation provides a stable long-term R-value at a lower cost
- Branch River insulation uses a blowing agent with 10 x lower global warming potential and 10,000 x lower ozone depletion
- Branch River insulation meets strength requirements at a lower cost
- Branch River insulation and XPS have resistance to moisture, but Branch River insulation has a higher vapor permeance leading to superior drying potential
- Branch River insulation with borate treatment available to provide termite resistance

Performance Value.

When you consider all performance characteristics and cost, Branch River insulation is your best choice for foam insulation.

Branch River insulation has air in its closed cells and therefore has a stable R-value. Many other insulations use blowing agents that cause R-value loss and are harmful to the environment.

Branch River insulation has compressive strength to meet specific project requirements.

Branch River insulation is manufactured to resist moisture absorption in wetting conditions and release absorbed moisture quickly during drying periods, which means Branch River insulation maintains R-value.

Termite Resistant.

One of the most destructive forces anywhere is termites. Branch River insulation can be manufactured with borate, a proven and safe additive, that effectively resists termites.

Branch River insulation with borate meets ICC ES AC239, "Acceptance Criteria for Termite-Resistant Foam Plastics".

Recyclable.

After its life as a building insulation, Branch River insulation is 100% recyclable. It can be ground into granules and reincorporated into new Branch River insulation products or it can be thermally processed into a resin that's used to manufacture other new products.

Ready to take control? Start here.

If you're ready to have Branch River insulation contribute to your next project, just contact your Branch River Plastics, Inc. Technical Sales Representative. They will be happy to give you design consultation, information about Branch River insulation products, pricing, and answers to all of your questions.



PLASTICS, INC.

15 Thurber Boulevard

Smithfield, RI 02917

P: 401-232-3434

www.branchriver.com



Branch River insulation products are
manufactured by Branch River Plastics, Inc.

Copyright © 2020 Branch River Plastics, Inc.

UL logo is a registered trademark of UL LLC.

BRP05-11/20



www.branchriver.com

**MOLDED
POLYSTYRENE
INSULATION**